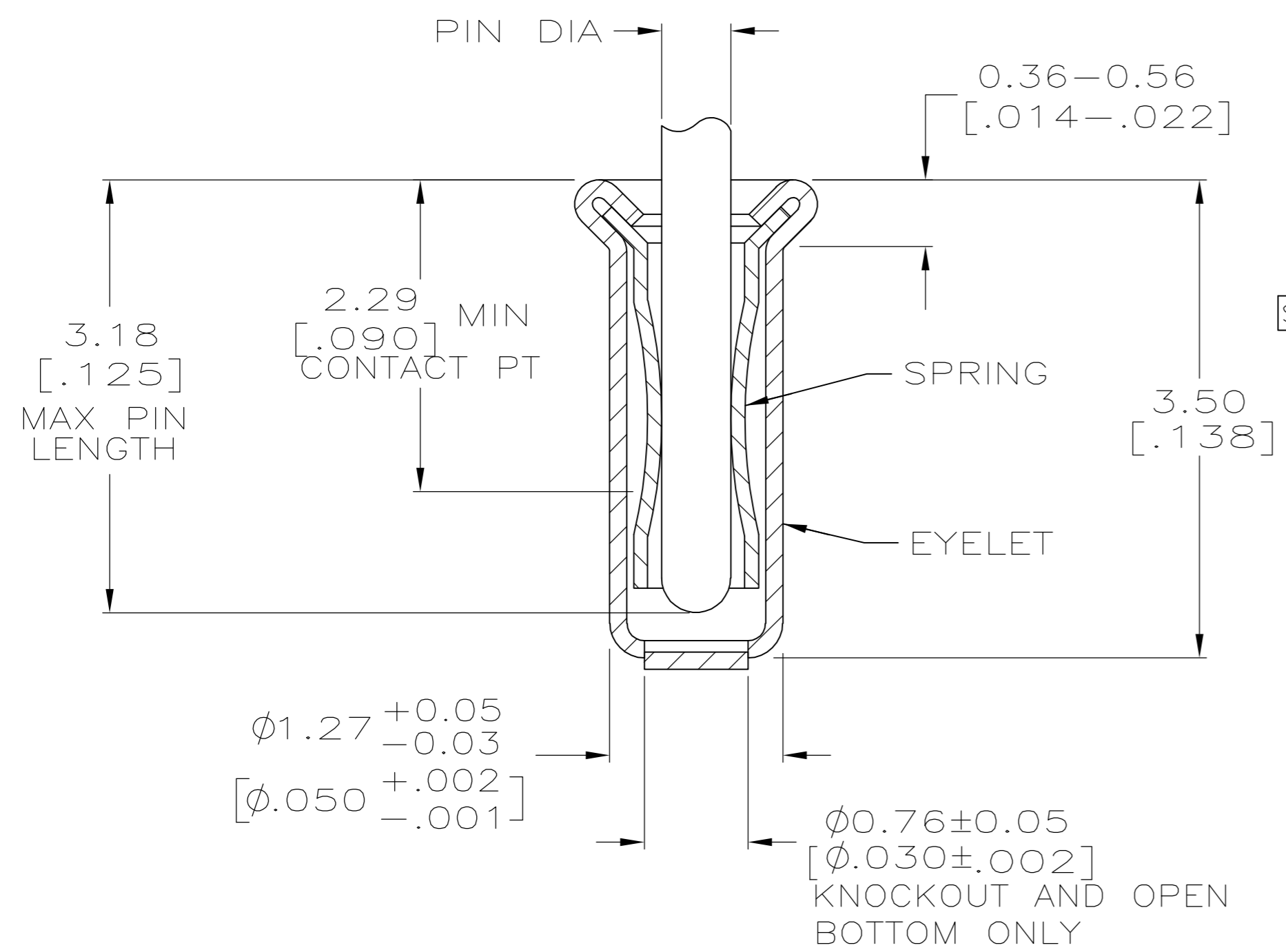
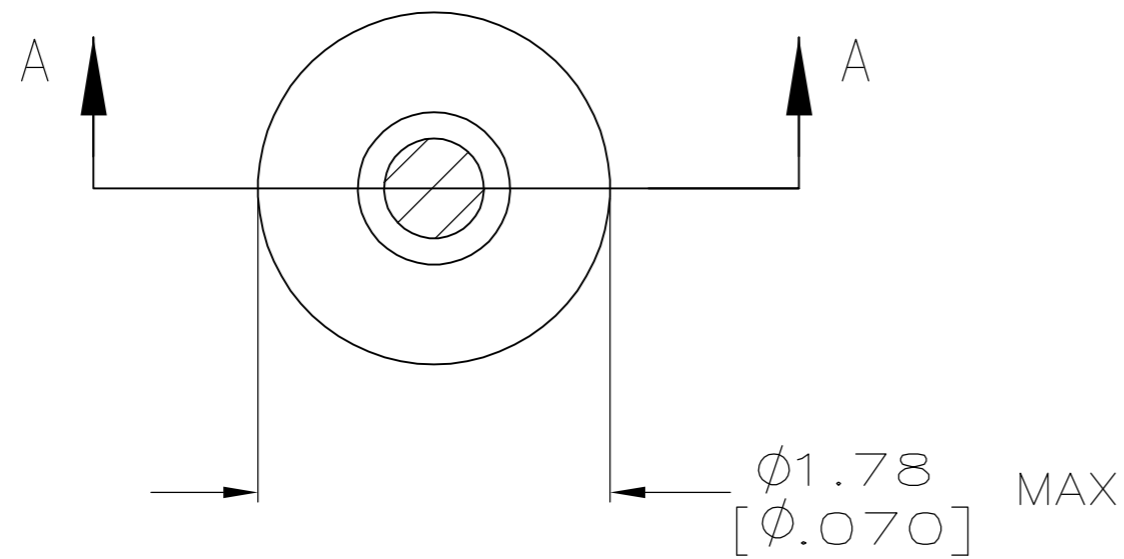


THIS DRAWING IS UNPUBLISHED. RELEASED FOR PUBLICATION
 © COPYRIGHT BY TYCO ELECTRONICS CORPORATION. ALL RIGHTS RESERVED.

LOC		DIST		REVISIONS			
P	LTR	DESCRIPTION		DATE	DWN	APVD	
AS2		REV PER ECO-06-018765		13APR07	DH	DB	



A-A SECTION

- ① TIN PER MIL-T-10727 OR TIN LEAD .000254 [.000100] MIN THK.
- ② GOLD PER MIL-G-45204, TYPE II, 0.00076 [.000030] MIN THK OVER NICKEL PER QQ-N-290 0.00028 [.000011] MIN THK ON CONTACT AREA.
- ③ GOLD FLASH PER MIL-G-45204, TYPE II, 0.13 μ m [.000005] MIN THK. OVER NICKEL PLATE PER QQ-N-290 0.51 μ m-1.52 μ m [.000020-.000060] EXT THK.
- 4. RECOMMENDED HOLE SIZE, PLATED OR UNPLATED:
 MACHINE INSERTION: 1.32±0.05 [.052±.002]
 HAND INSERTION: 1.32 +0.10/-0.00 [.052 +.004/-0.000]
- 5. APPLICATION TOOL PART NUMBER:
 MACHINE NO. 682127-3
 INSERTION HEAD NO. 682039-2
- ⑥ TO INSURE PROPER SPRING TENSION DO NOT EXCEED A 0.05 [.002] DIFFERENCE IN PIN DIA WHEN CHANGING TO A SMALLER PIN.
- 7. BOTTOM PLUG KNOCKOUT TOOL PART NUMBER 69729 WITH TIP PART NUMBER 69728.
- ⑧ MATERIAL: SPRING: BERYLLIUM COPPER QQ-C-533
 EYELET: COPPER: QQ-C-576

SUPSD BY 2-331272-7					331272-2
OBSOLETE	OPEN	0.56-0.64 [.022-.025]	TIN ①	GOLD ②	4-331272-3
OBSOLETE			GOLD ③	TIN ①	4-331272-2
OBSOLETE	OPEN	0.46-0.53 [.018-.021]	TIN ①	TIN ①	4-331272-1
OBSOLETE			GOLD ③	GOLD ②	3-331272-9
OBSOLETE	KNOCKOUT	0.56-0.64 [.022-.025]	TIN ①	TIN ①	3-331272-8
OBSOLETE			GOLD ③	GOLD ②	3-331272-7
OBSOLETE	KNOCKOUT	0.56-0.64 [.022-.025]	TIN ①	GOLD ②	3-331272-5
OBSOLETE			GOLD ③	TIN ①	3-331272-4
OBSOLETE	CLOSED	0.56-0.64 [.022-.025]	TIN ①	GOLD ②	3-331272-3
OBSOLETE			GOLD ③	GOLD ②	3-331272-1
OBSOLETE	CLOSED	0.46-0.53 [.018-.021]	TIN ①	GOLD ②	3-331272-0
OBSOLETE			GOLD ③	TIN ①	2-331272-7
OBSOLETE	CLOSED	0.56-0.64 [.022-.025]	TIN ①	TIN ①	2-331272-6
OBSOLETE			GOLD ③	TIN ①	2-331272-5
OBSOLETE	CLOSED	0.46-0.53 [.018-.021]	TIN ①	GOLD ②	2-331272-3
OBSOLETE			GOLD ③	GOLD ②	2-331272-2
OBSOLETE	CLOSED	0.46-0.53 [.018-.021]	TIN ①	TIN ①	2-331272-1
OBSOLETE			GOLD ③	TIN ①	2-331272-1
BOTTOM TYPE		RECOMMENDED PIN DIA ⑥	EYELET	SPRING	PART NO
			FINISH		

THIS DRAWING IS A CONTROLLED DOCUMENT. DWN 4-5-91
 R. TALLEY
 CHK -
 APVD -
 PRODUCT SPEC -
 APPLICATION SPEC -
 WEIGHT -

tyco Tyco Electronics Corporation
Electronics Harrisburg, Pa 17105-3608

NAME
 MINIATURE SPRING SOCKET ASSEMBLY, SERIES 2

SIZE A2 CAGE CODE 00779 DRAWING NO C=331272 RESTRICTED TO -
 SCALE 20:1 SHEET 1 OF 1 REV AS2

DIMENSIONS: mm [INCHES]
 TOLERANCES UNLESS OTHERWISE SPECIFIED:
 0 PLC ± -
 1 PLC ± -
 2 PLC ± -
 3 PLC ± 0.20 [.008]
 4 PLC ± -
 ANGLES ± -
 FINISH SEE TABLE

MATERIAL - ⑧

CUSTOMER DRAWING